



CREATE AN ENCRYPTED STORAGE AREA

UK DATA ARCHIVE
UNIVERSITY OF ESSEX



**UK • DATA
ARCHIVE**

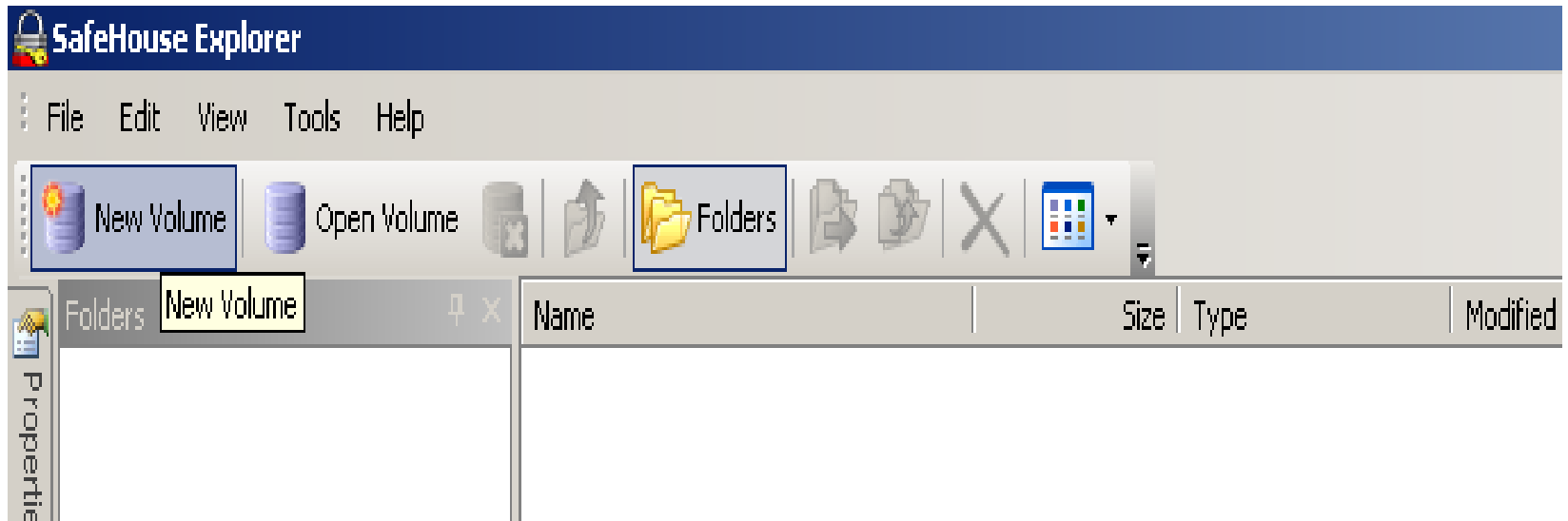
USING SAFEHOUSE SOFTWARE

- download SafeHouse explorer from <http://www.safehousesoftware.com/> (Windows only)
- install
- open SafeHouse Explorer

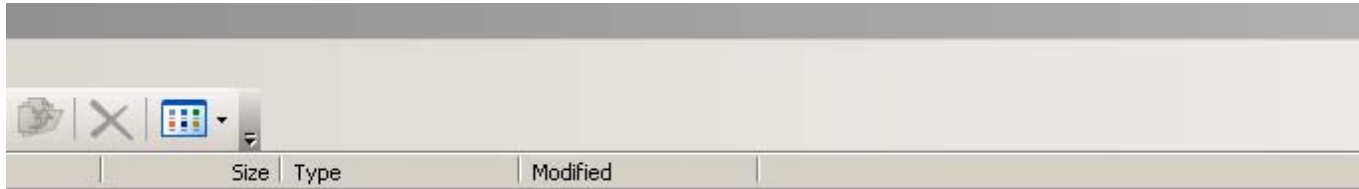


CREATE A NEW VOLUME

- click 'New Volume'.
- follow the wizard by clicking 'Next'



CHOOSE NAME AND LOCATION



Create New Volume

SafeHouse

Name of Private Storage Area

Please choose a name for the SafeHouse volume file to be created to hold your confidential files.

You may also enter a short description for this volume which will be displayed throughout SafeHouse's dialogs.

Folder: 

Filename: .sdsk

Description:

< Back Next > Cancel Help

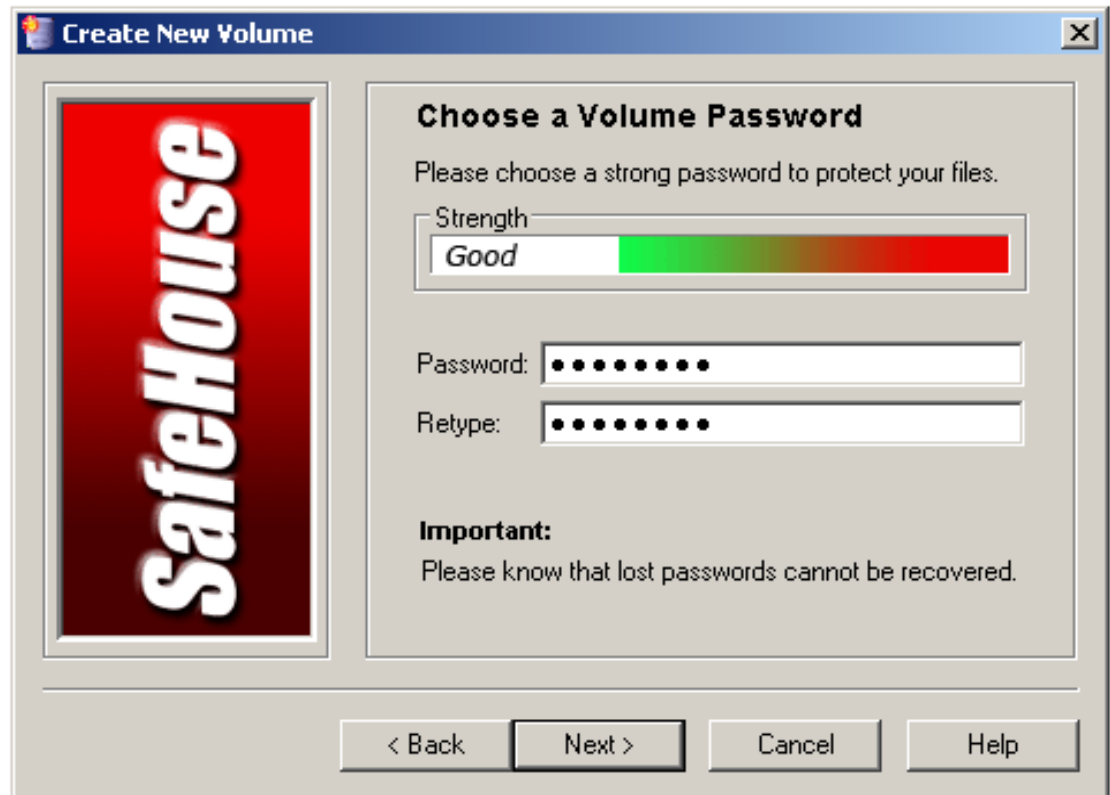
SET VOLUME SIZE

- set the volume size you want in kilo/mega/gigabytes
- remember to leave 5mb for the safehouse.exe file



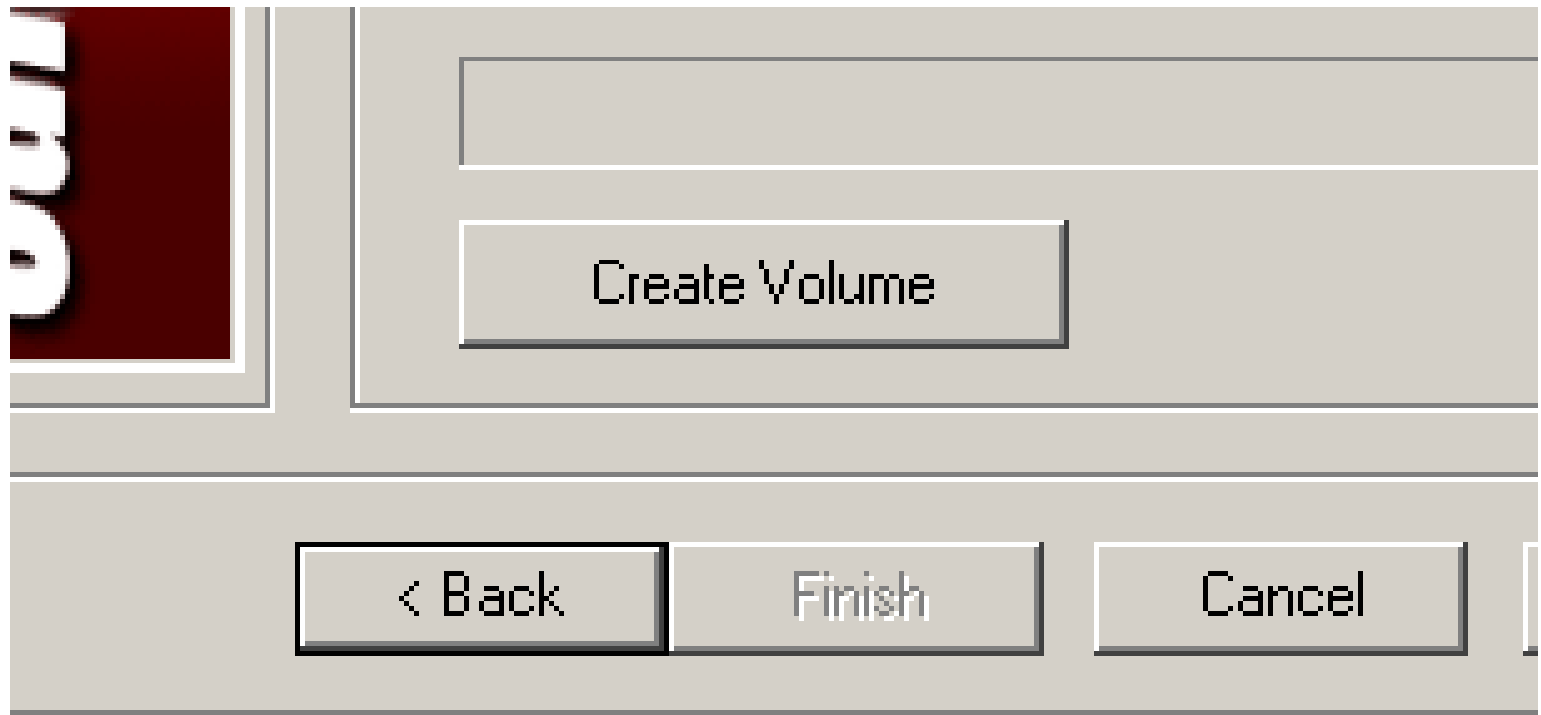
CREATE A PASSWORD/PASSPHRASE

- incorporate a range of upper and lower case letters, number, and other characters
- Do not forget your password!



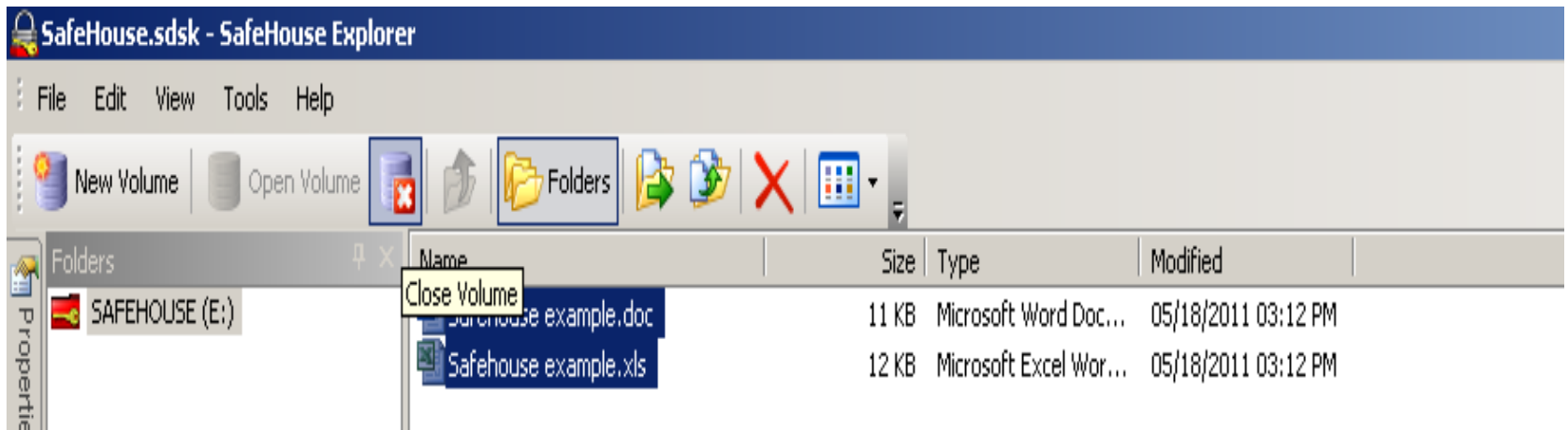
CREATE YOUR VOLUME

- create your encrypted area by clicking 'Create Volume'



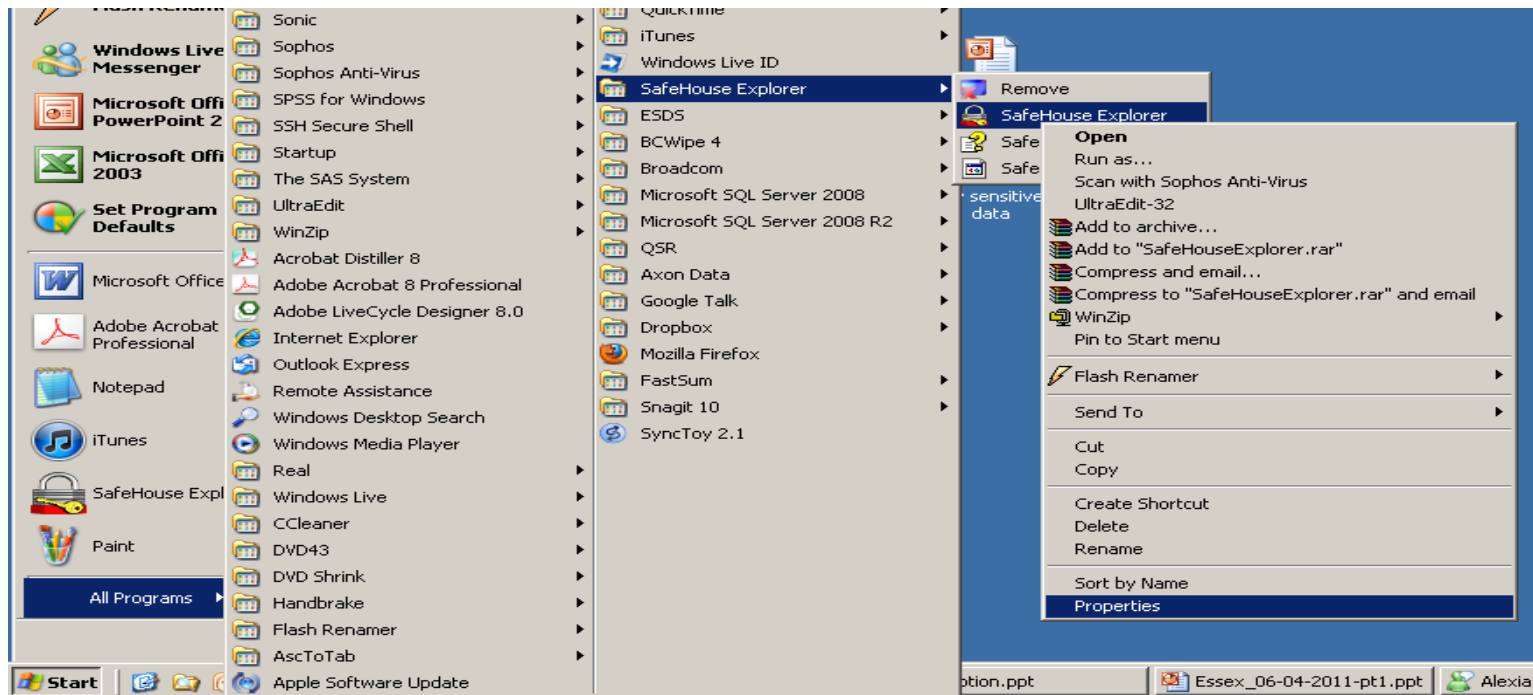
COPY OVER YOUR FILES

- drag in your files
- when done, press the 'Close Volume' icon



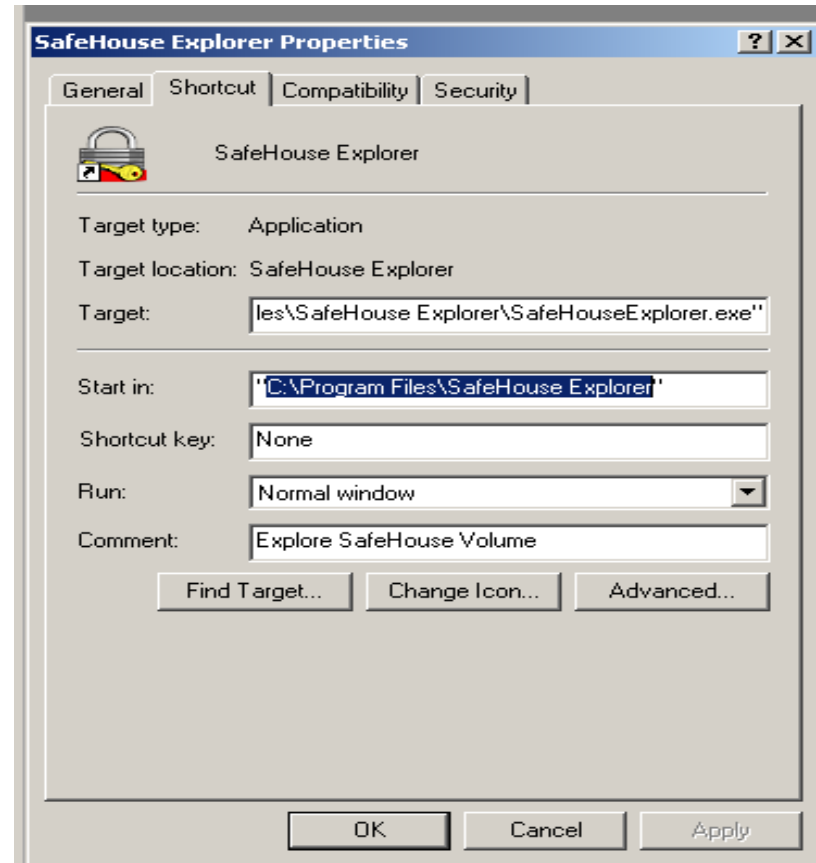
COPY THE .EXE FILE - 1

- copy the .exe file to your mobile device so you can open your encrypted space on other Windows PCs
- click 'Start', find the SafeHouse Explorer folder, find SafeHouse Explorer, right click, select 'Properties'



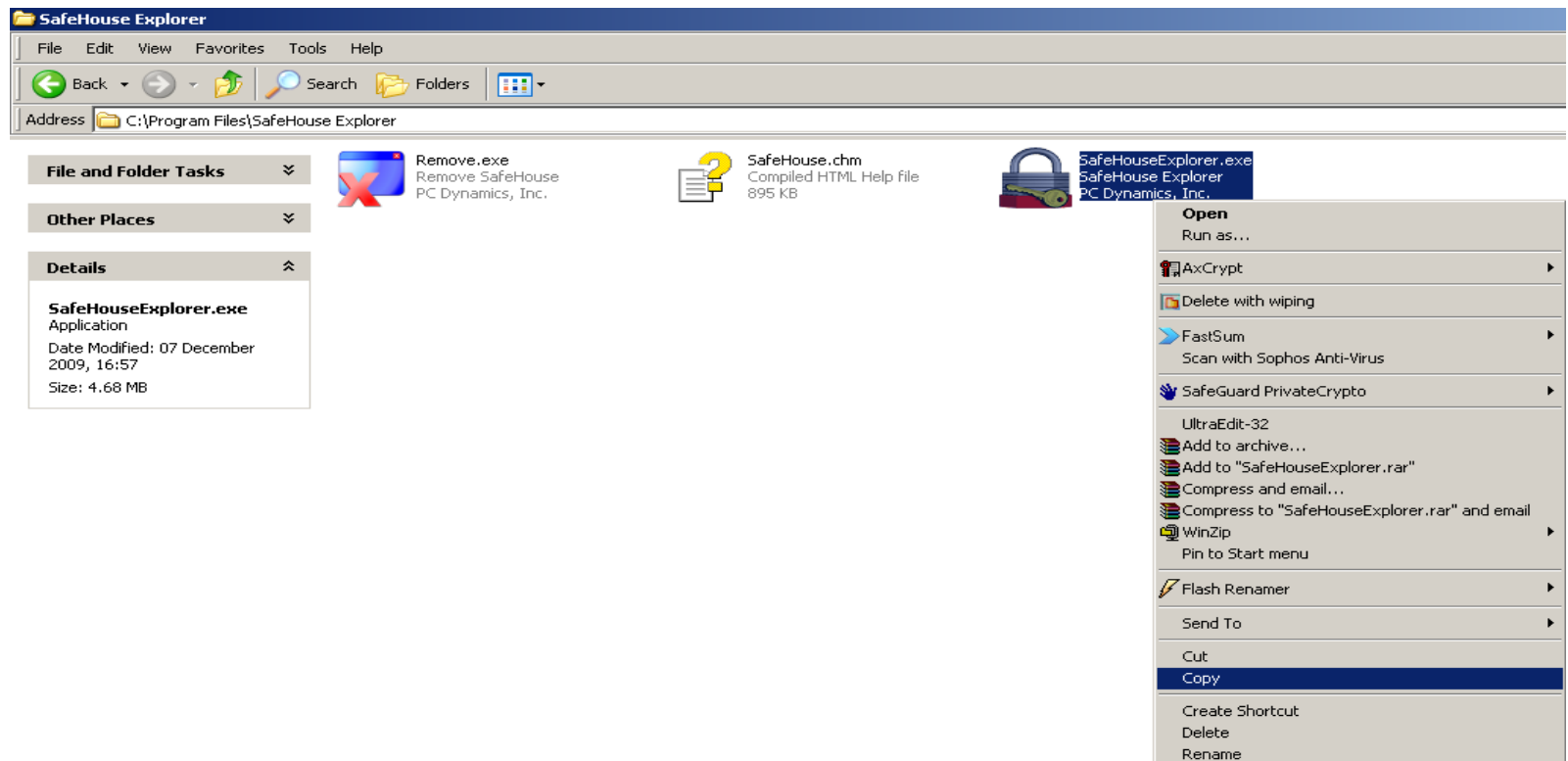
COPY THE .EXE FILE - 2

- highlight the 'Start in:' box, copy the text inside the quotations



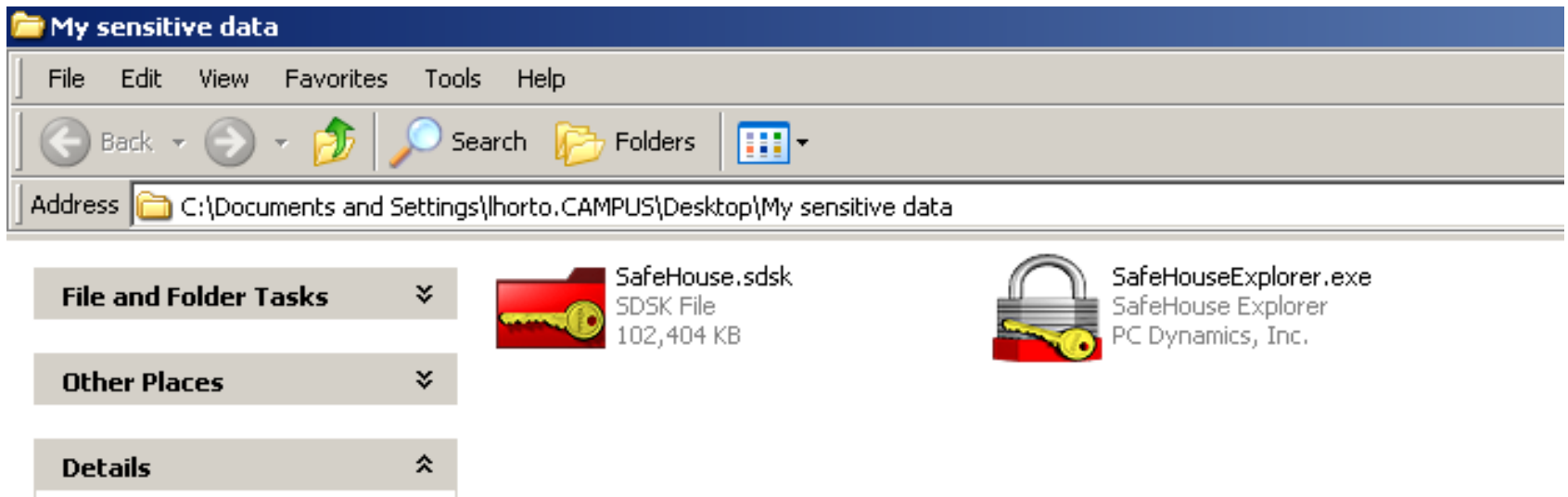
COPY THE .EXE FILE - 3

- paste into the Windows Explorer address bar and press 'Enter'
- highlight SafeHouseExplorer.exe, right click and copy



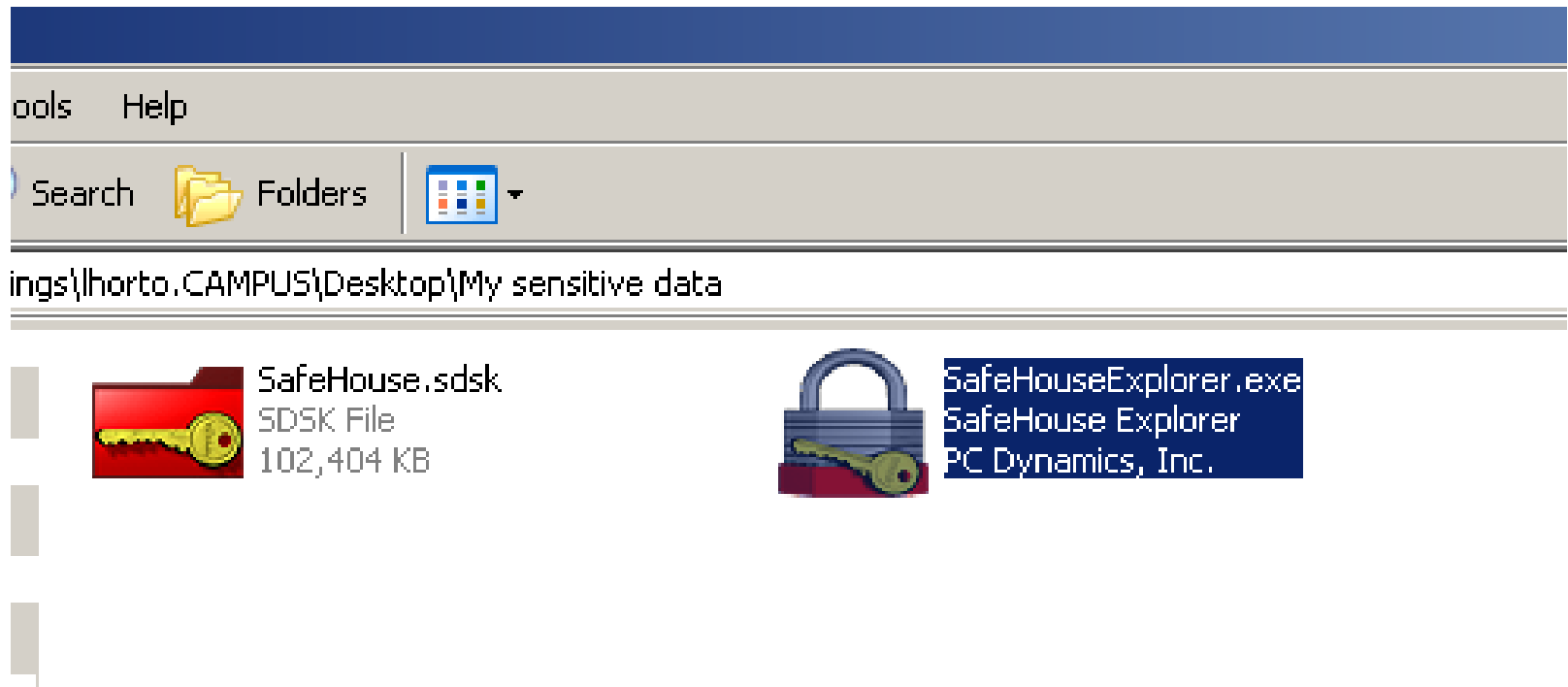
COPY THE .EXE FILE - 4

- paste into the area next to where you are storing your encrypted storage area. This will allow you to open your area on other Windows PCs that do not have SafeHouse installed



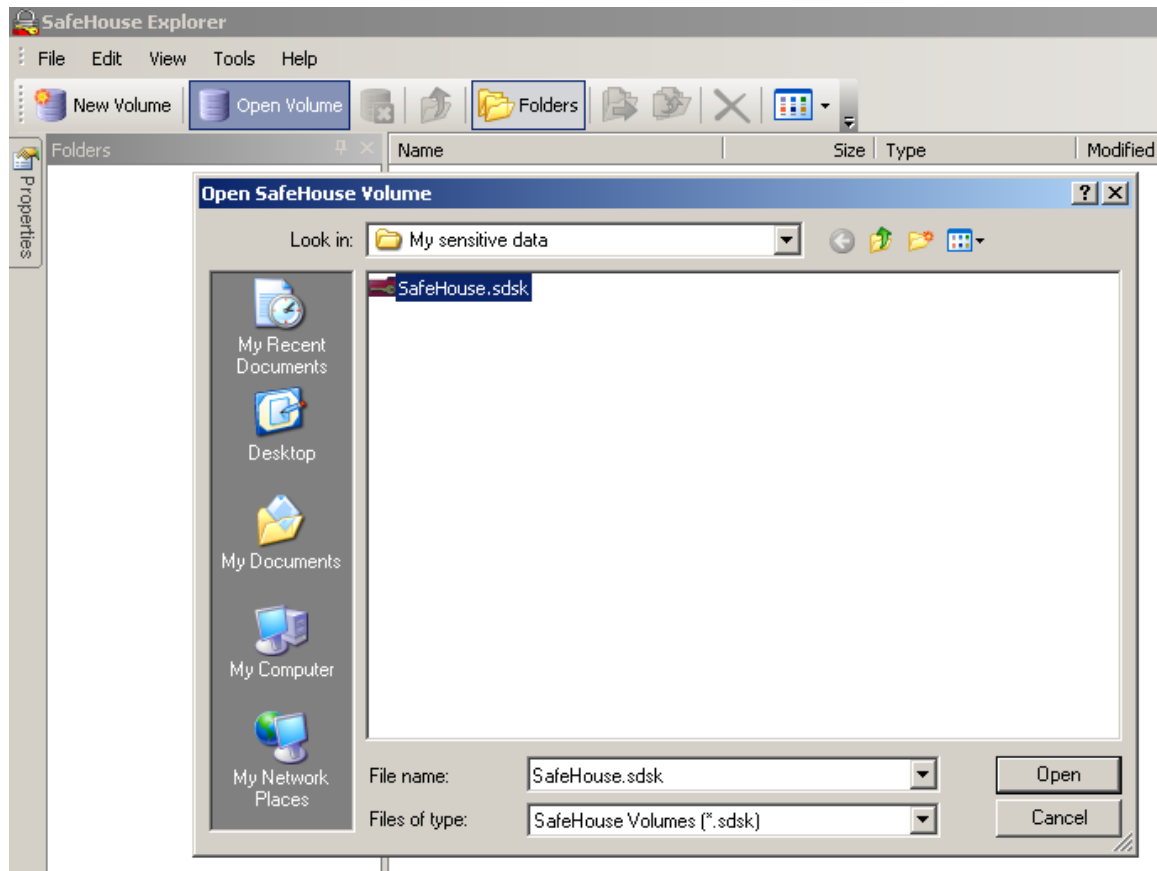
OPEN YOUR ENCRYPTED AREA - 1

- click the padlock icon - SafeHouseExplorer.exe



OPEN YOUR ENCRYPTED AREA - 2

- click 'Open Volume'
- select your area - 'SafeHouse.sdisk' in this example
- click 'Open'



OPEN YOUR ENCRYPTED AREA - 3

- enter your password and click 'Open'
- your files should appear



CLOSE YOUR AREA

- when you have finished, click 'Close Volume'

